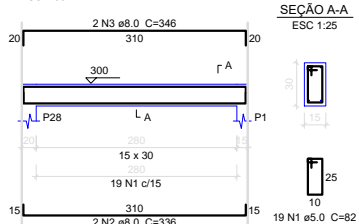
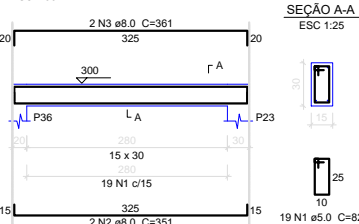


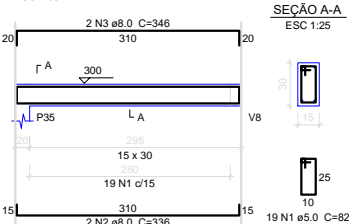
V12  
ESC 1:50



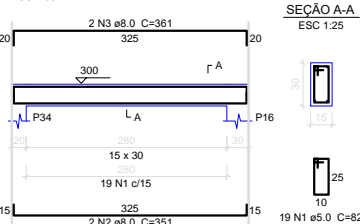
V14  
ESC 1:50



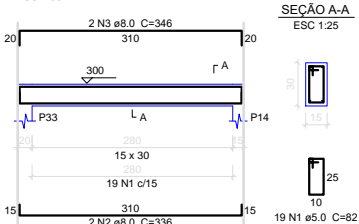
V15  
ESC 1:50



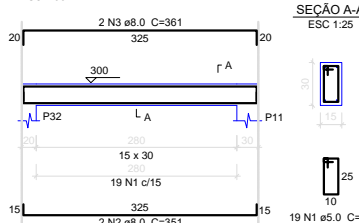
V16  
ESC 1:50



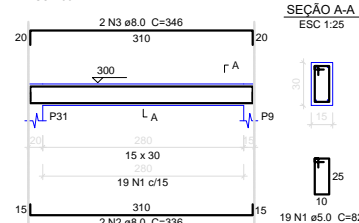
V17  
ESC 1:50



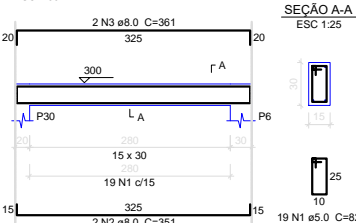
V18  
ESC 1:50



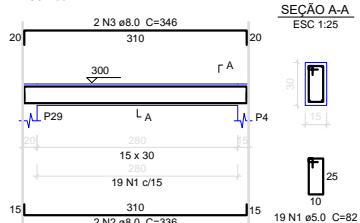
V19  
ESC 1:50



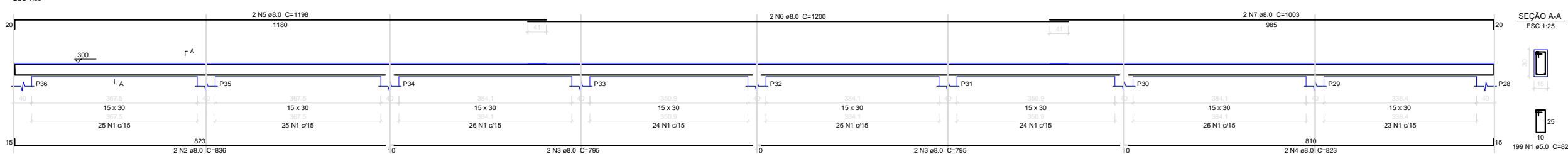
V20  
ESC 1:50



V21  
ESC 1:50



V13  
ESC 1:50



Relação do aço

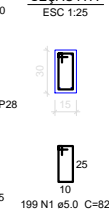
ELEMENTO	AÇO	N	DIAM	Q	UNIT (cm)	C.TOTAL (cm)
V12	CA60	1	5.0	19	82	1558
	CA50	2	8.0	2	336	672
	CA50	3	8.0	2	346	692
V13	CA60	1	5.0	199	82	16318
	CA50	2	8.0	2	836	1672
	CA50	3	8.0	4	795	3180
	CA50	4	8.0	2	823	1646
	CA50	5	8.0	2	1198	2396
	CA50	6	8.0	2	1200	2400
	CA50	7	8.0	2	1003	2006
V14	CA60	1	5.0	19	82	1558
	CA50	2	8.0	2	351	702
	CA50	3	8.0	2	361	722
V15	CA60	1	5.0	19	82	1558
	CA50	2	8.0	2	336	672
	CA50	3	8.0	2	346	692
V16	CA60	1	5.0	19	82	1558
	CA50	2	8.0	2	351	702
	CA50	3	8.0	2	361	722
V17	CA60	1	5.0	19	82	1558
	CA50	2	8.0	2	336	672
	CA50	3	8.0	2	346	692
V18	CA60	1	5.0	19	82	1558
	CA50	2	8.0	2	351	702
	CA50	3	8.0	2	361	722
V19	CA60	1	5.0	19	82	1558
	CA50	2	8.0	2	336	672
	CA50	3	8.0	2	346	692
V20	CA60	1	5.0	19	82	1558
	CA50	2	8.0	2	351	702
	CA50	3	8.0	2	361	722
V21	CA60	1	5.0	19	82	1558
	CA50	2	8.0	2	336	672
	CA50	3	8.0	2	346	692

Resumo do aço

AÇO	DIAM	C.TOTAL (m)	PESO (kg)
CA50	8.0	258.2	101.9
CA60	5.0	303.4	46.8
PESO TOTAL			
CA50	101.9		
CA60	46.8		

Vol. de concreto total (C-25) = 2.78 m³  
Área de forma total = 46.37 m²

SEÇÃO A-A  
ESC 1:25



## DETALHAMENTO DE VIGAS

Esc: 1:200



### PREFEITURA MUNICIPAL DE VÁRZEA GRANDE

Av. Castelo Branco, Espaço Municipal, 2500 - Centro Sul, Várzea Grande/MT

CEP 78125-700 - Fone/Fax: 65 3688 8000

PROJETO: PROJETO ESTRUTURAL  
DA EMEB SENHORA DIRCE DE LEITE CAMPOS

OBRA: RECONSTRUÇÃO DO BLOCO  
DA EMEB SENHORA DIRCE DE LEITE CAMPOS

LOCALIZAÇÃO:  
RUA MARQUÊS DE SÃO VICENTE, JARDIM ITORORÓ

ASSUNTO:  
DETALHAMENTO DE VIGAS

AUTOR DO PROJETO:

VITOR GUSTAVO VERHALEN  
ENGENHEIRO CIVIL CREA-MT 49989

ESCALA:

INDICADA

DATA:

JANEIRO /2021

ÁREA:

ÁREA TOTAL TERRENO:  
6.315.52m²

UNIDADE:

METRO

FOLHA Nº

07/07